



NWMSG
DESIGN.QUALITY.SERVICE.

STONE CLADDING SPECIALISTS

OUR COMPANY

OUR TEAM - DESIGN. QUALITY. SERVICE.

A simple philosophy, but it works.

That's why North Wicklow Marble & Granite has been in business for more than 20 years, and has a track record that is second to none. Our highly skilled team of stone masons and fixers have the capacity to meet any challenge - combining quality materials with traditional craftsmanship to complete every project on time, within budget and to the highest possible standards.

It stands to reason then, that client satisfaction has always been a priority for our company - and on this point, our order book speaks for itself. Repeat business and recommendations make up the majority of current contracts, justifying our reputation for quality and customer service.

OUR SERVICE

Whatever the contract - our team has the skill and creativity to make it as good as it can possibly be.

Operating on a nationwide basis, we offer expert advice on material selection and stone suitability to ensure that every project realises its full potential. Liaising with clients and architects, we can provide a comprehensive design and scheduling service, as well as budgetary advice on materials and fixing systems.

Tailor-made granites, marbles, limestones and sandstones are sourced by our company from manufacturers worldwide - the production of which is closely monitored by factory visits and site inspections on a regular basis. Choosing from a list of our extensive services - cladding, flooring, hard landscaping or walling - clients can opt for supply and fix supply-only or fix-only options, with or without design.

This flexibility of choice is a hallmark of North Wicklow Marble & Granite - a flexibility that ensures client control and peace of mind from start to finish. Offering advice on materials and design, our company liaises with clients and architects to devise the best possible solutions for every project.



GRANGE TOWN CENTRE

Developer: Gammon Homes
 Architect: Conroy Crow Kelly
 Main Contractor: Piersce Contracting Ltd
 Material: Granite, Sandstone, Limestone
 NWMG: Cladding, Paving, Kerb, Channel, Capping



This vast project consists of three separate developments. Block 12, Block 16 and the Town Square. Due to the tight schedule on Block 16, our team made history by being the first in Ireland to use the kg200 and 400 support system. This, combined with excellent working relationships with the main contractor and the architects, ensured a seamless contract delivery.

Town square
 This is a public square area consisting of 3900m² of G682 paving, 900lm of G341 kerbing, 650m of G341 channel, and 200m² of honed G684 cladding with 50lm of feature capping.

The square is linked to a new DART station by an area of paving steps and ramps referred to as the 'Spanish steps'. This consists of 500m² of paving and 250lm of solid steps in G603, as well as 460lm of solid walling to the ramps and planters in Shanxi black.



Block 12
 Block 12 is a mixed development, incorporating retail units, residential units and a hotel. North Wicklow Marble & Granite completed 415 m² of honed G684 cladding, 1300m² of honed mocha crème cladding, and 242m² of Agra red sandstone cladding and soffit. This project also included 213lm of capping.

Block 16
 Completed in October 2007, the contract consisted of 840 m² of Moleanos limestone with honed and bushhammered finishes, and 423m² of Azul platino in polished, honed and flamed finishes fixed to curved elevations.



RATHFARNHAM

Client: Mr. Peter McMenamin
Architect: DN Smyth & Associates
Material: G341
NWMG: Portico



Combining quality materials with traditional craftsmanship, our company brings a unique versatility and creativity to every contract. This is a perfect example of mixing traditional solid stonework with the more modern method of cladding to achieve an authentic finish.

Four solid granite columns complete with base and capital were built of solid granite plinths which are fixed to a concrete foundation. The apex to the top of the portico is 40mm cladding which is fixed to a steel frame which gives retention to the top of the columns. Solid granite steps, which were bored to accommodate flush fitting up lighters, lead to a granite paved landing.

This prestigious project required major input from North Wicklow Marble & Granite in terms of materials selection and suitability. The result is testament to the experience and creativity of our team.

Our team used 40mm Carlow Limestone cladding with a pean hammered finish to the face, a sanded finish to the reveals and flamed finished limestone to the recessed fascia panels. Impala polished black granite was used for the plinth under the window cills.

Meanwhile, the church yard consists of limestone surrounds built into random walling to accommodate the various Stations of the Cross.



TRIM CASTLE HOTEL & CHURCH

Developer: Nero Developments Ltd
Main Contractor: David O'Brien
Material: Carlow Blue Limestone, Impala Black Granite
NWMG: Cladding, Cills, Cappings
Feature work in church yard



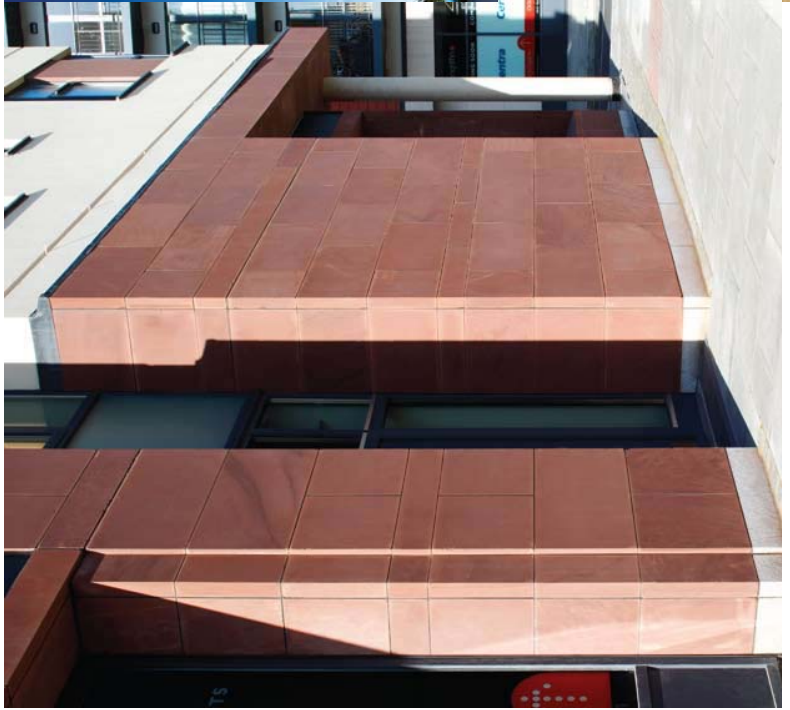
CLONGRIFFEN BLOCK 20-23

Developer: Killoe Developments
Barina Developments
Architect: Conroy Crow Kelly
Main Contractor: Killoe Developments
Barina Construction
Material: Limestone, Sandstone, Granite
NWMG: Cladding, Cills

Block 20

A retail development, which we clad in sanded Agra red sandstone and G603 bushhammered plinth with G684 honed panels to carry signage, this project involved fixing to a combination of block work and steel frame.

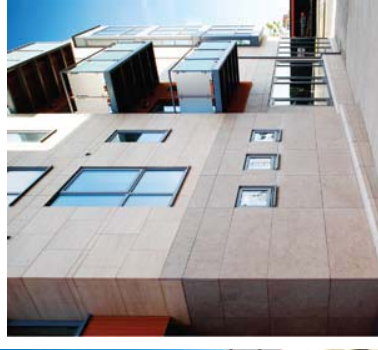
Our first experience working with this developer, it has led to repeat orders.



Block 22 & 23

Expert advice is a cornerstone of the service at North Wicklow Marble & Granite. In this mixed development, our client made substantial savings by ditching the laborious steel frame intended to carry his shop front fascia, and opting instead for an alternative system of secondary steel. This alternative system was designed and installed by our team.

Block 22 is a mixed development using approximately 700m² of honed flurry cut mocha creme cladding, with 200m² of Gascoigne blue cladding and cill to the ground floor shop fronts.



LANSDOWNE GATE

Developer: Cosgrave Properties
Architect: O'Mahony Pike
Main Contractor: Cosgrave Developments
Material: Granite
NWMG: Cladding, Capping, Signage



A residential development where we supplied and fitted Haisa white grain granite from China in a bush hammered finish to block A and H and the crèche with 550mm wide capping to the balconies and roof tops, we also supplied wall and pier capping in G603 along with clad gate piers and name plates with hand cut lettering

Another contract we completed on time and on budget with Cosgrave Developments. We worked closely with the site team to achieve the high standards demanded by the Cosgrave group. Our performance has again led to repeat orders.



EDEN GATE

Developer: Cosgrave Properties
Architect: Bernard J Burke & Associates
Main Contractor: Cosgrave Developments
Material: Granite
NWMG: Cladding, Paving, Kerb, Channel, Capping



Overcoming challenges is what we do best at. North Wicklow, Marble & Granite. In this project, we were presented with the dilemma of 60mm cladding to the soffit of large windows. In co-operation with Cosgrave Developments, our team designed and installed a special support system, which carried the brick over the windows and the soffit under the brick.

Eden Gate is a neighbourhood centre between Delgany and Killoole, Co. Wicklow. Our company supplied and fitted cladding, capping, window surrounds, kerb, paving, railing base and solid granite gate piers in bush hammered G603.

SWORDS SHOPPING CENTRE

Developer: Mall Developments
Architect: Anthony Reddy & Associates
Main Contractor: Pierse Contracting Ltd.
Material: Granite - Pedros Salgadas
NWMG: Cladding

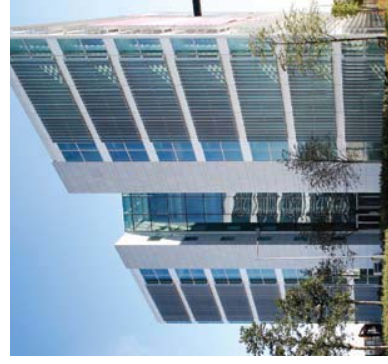


Pedro Salgadas granite from Spain was the material used for the front elevation in a honed finish while the same material was used for the mall pliers in a combination of honed, polished and flamed finishes.

One of many repeat orders from Pierse Contracting, we achieved lead in times of 3 to 5 weeks for materials which combined with our ability to work well with this contractor, ensured the project was completed on time and budget.

EASTPOINT

Developer: Earlsfort Eastpoint Ltd
Architect: Scott Tallon Walker
Main Contractor: Pierse Contracting Ltd.
Material: Granite
NWMG: Cladding, Paving, Vanity Tops



This project consists of 2900 m² of bushhammered cladding capped with 190lm of 480mm wide solid capping, 220 m² of flamed 40mm paving leads you to the main entrance of pinnacle 1 and 2 where 94m² of honed lobby flooring meets you. We also supplied and fitted 30 vanity units in a polished finish, 16 of which were full vanity units with under mounted sinks and the balance hall sink units.

The main body of work on this project was completed in just under 5 months, this was achieved by close co-operation with the site manager whom we have a long and successful history



COMMERCIAL FITOUT SOUTH DUBLIN

Main Contractor: M & R Doyle

Building Services Ltd

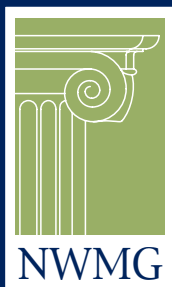
Material: Juparana Gold Polished Granite

NWVG: Cladding



Our company prides itself on completing every contract on time. In this contract, a lead in time of just four weeks was achieved. This included survey, design and schedule, procurement and shipping.

The Lift lobby was clad with juparina gold polished granite using totally traditional methods of fixing back to a combination of concrete block work and timber frame.



**NORTH WICKLOW
MARBLE & GRANITE**

29 Meadowbrook
Kilcoole
Co. Wicklow

T: 353 (0) 1 281 1777
F: 353 (0) 1 287 6305

E: info@nwmg.ie
W: www.nwmg.ie